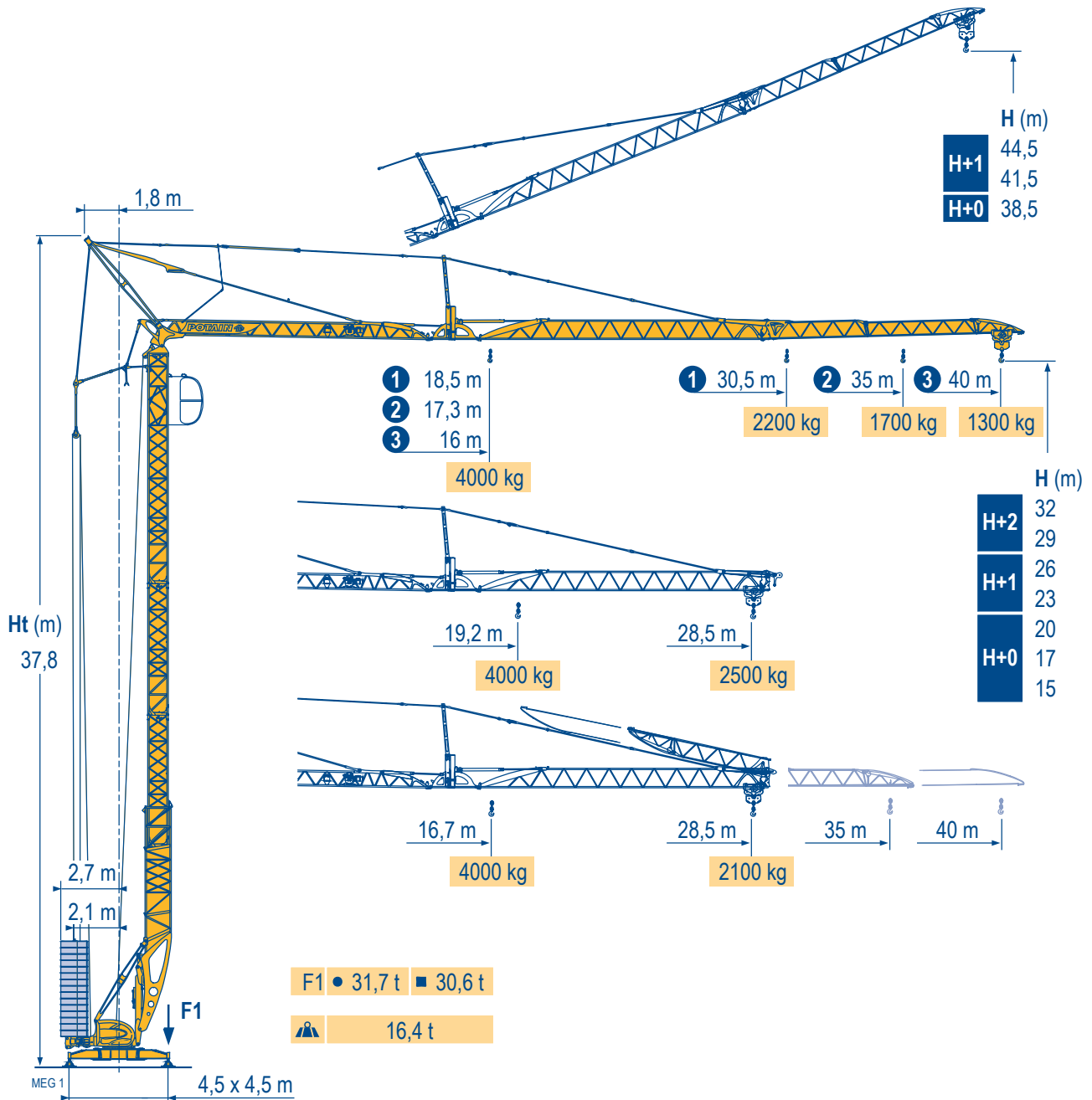
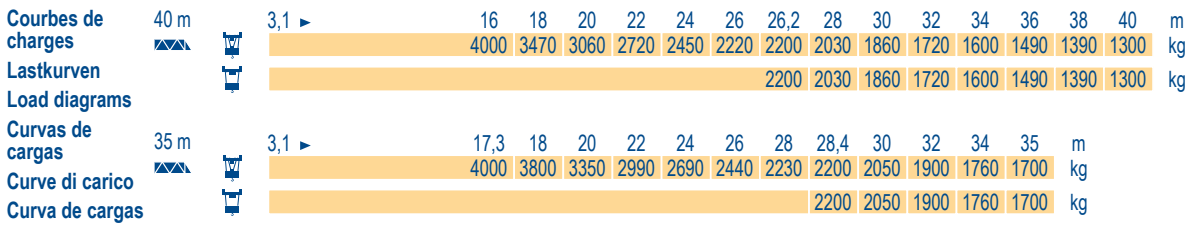
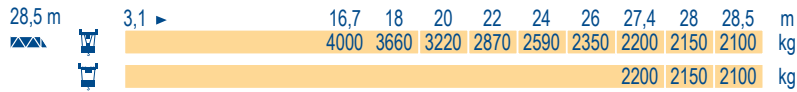
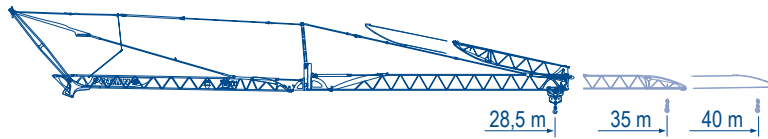
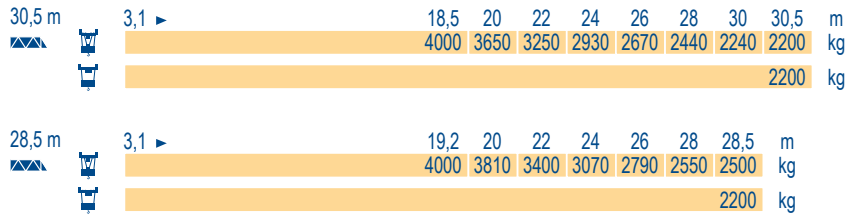


Igo T 70



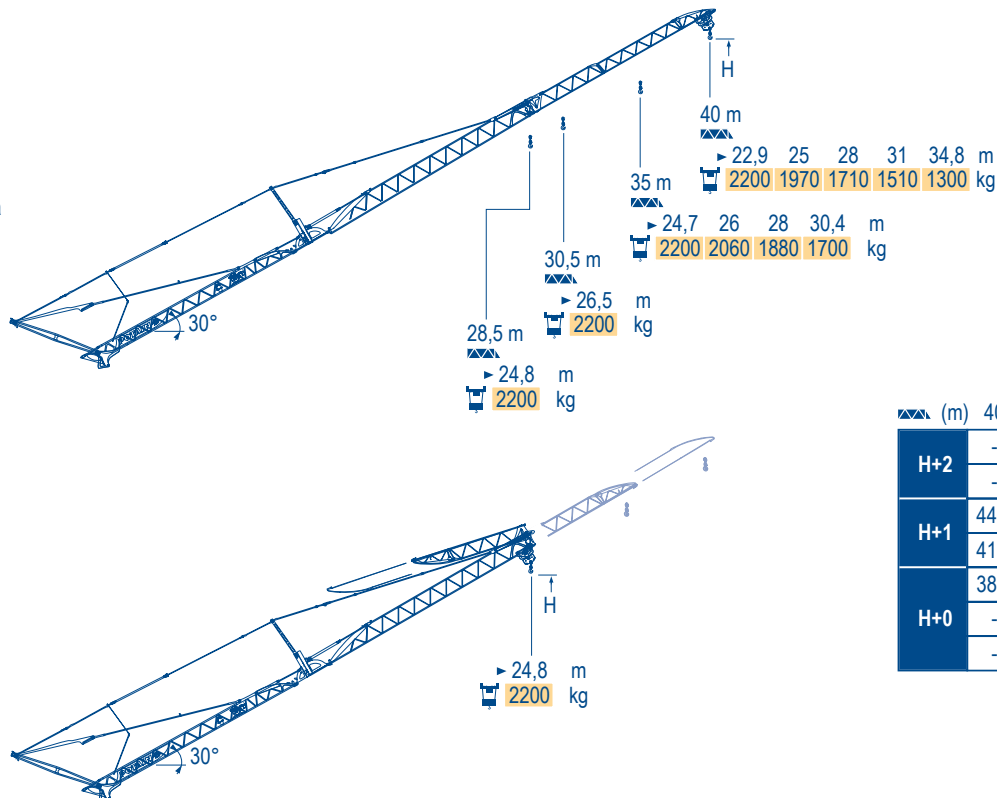


MEG 1



Flèche relevée
Ausleger in Steilstellung
Luffing jib
Flecha izada
Braccio impennato
Lança inclinada

MEG 1



(m)	40	35	30,5	28,5
H+2	-	-	45,7	44,7
H+1	44,5	42	39,7	38,7
H+0	38,5	36	33,7	32,7
	-	-	-	-

Igo T 70



F	D	GB	E	I	P
● Réactions en service	● Reaktionskräfte in Betrieb	● Reactions in service	● Reacciones en servicio	● Reazioni in servizio	● Reações em serviço
■ Réactions hors service	■ Reaktionskräfte außer Betrieb	■ Reactions out of service	■ Reacciones fuera de servicio	■ Reazioni fuori servizio	■ Reações fora de serviço
▲ A vide sans lest (ni train de transport) avec flèche et hauteur maximum.	▲ Ohne Last, Ballast (und Transportachse), mit Maximalausleger und Maximalhöhe.	▲ Without load, ballast (or transport axes), with maximum jib and maximum height.	▲ Sin carga, sin lastre, (ni tren de transporte), flecha y altura máxima.	▲ A vuoto, senza zavorra (ne assali di trasporto) con braccio massimo e altezza massima.	▲ Sem carga (nem trem de transporte)- sem lastro com lança e altura máximas.

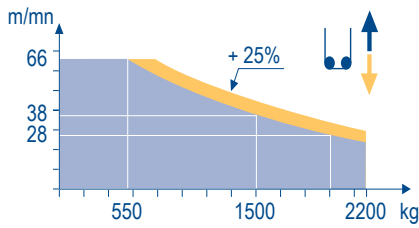
Mécanismes
Antriebe
Mechanisms
Mecanismos
Meccanismi
Mecanismos

MEG 1

		⬇					⬆					ch - PS hp	kW	
⬆	15 LVF 11 Optima	m/min	3,5	18	28	38	66	1,8	9	14	19	33	15	11
		kg	2200	2200	2200	1500	550	4000	4000	4000	3000	1100		
⬆	3 DVF 5	m/min	15 - 30 - 45 (0 → 1300 kg) - 15 - 30 - 41 (1300 → 4000 kg)										3	2,2
⬆	RVF 51 Optima +	tr/min U/min - rpm	0 → 0,8										5,5	4
⬆			i											

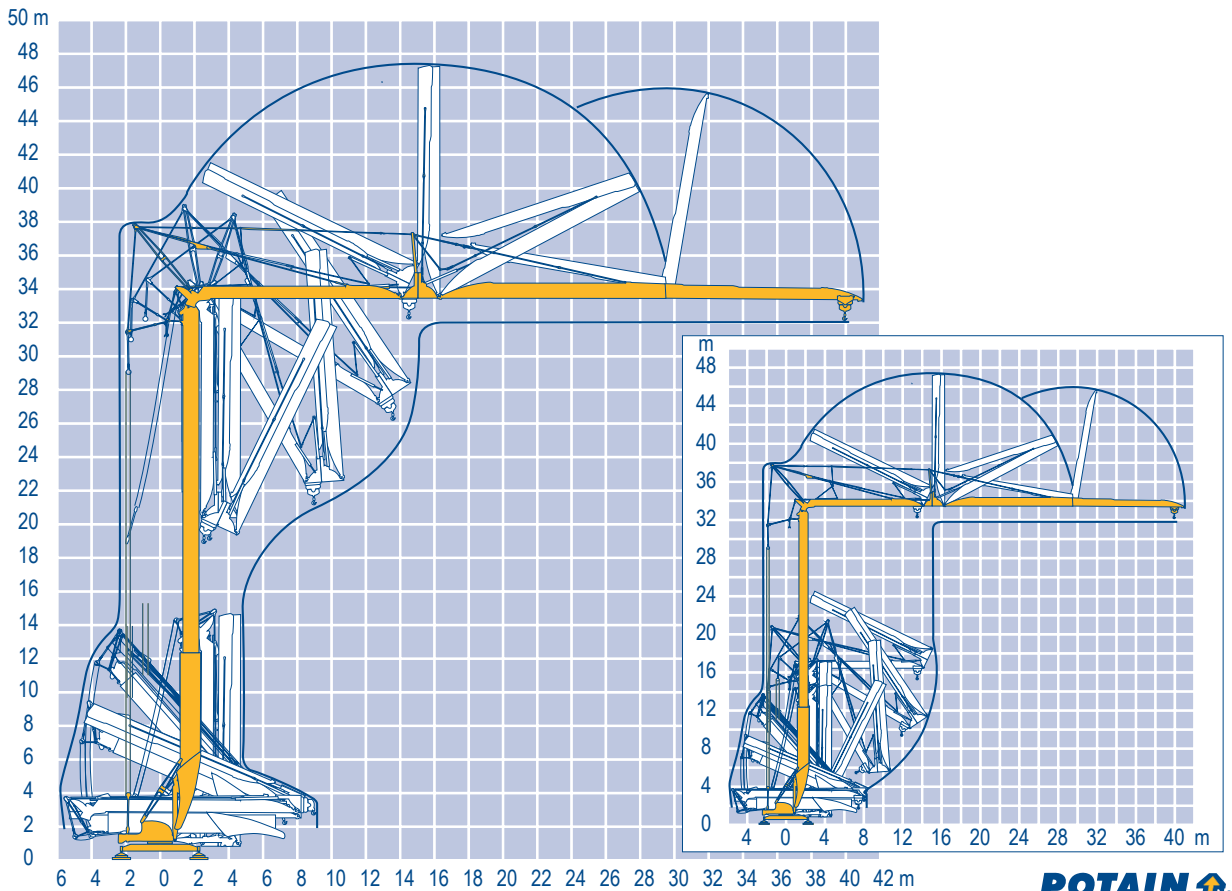
CEI 38	IEC 38	kVA
400 V (+6% -10%) 50 Hz		15 LVF 11 : 23 kVA
480 V (+6% -10%) 60 Hz		15 LVF 11 : 23 kVA

15 LVF 11 Optima



Montage
Montage
Erection
Montaje
Montaggio
Montagem

MEG 1



Igo T 70

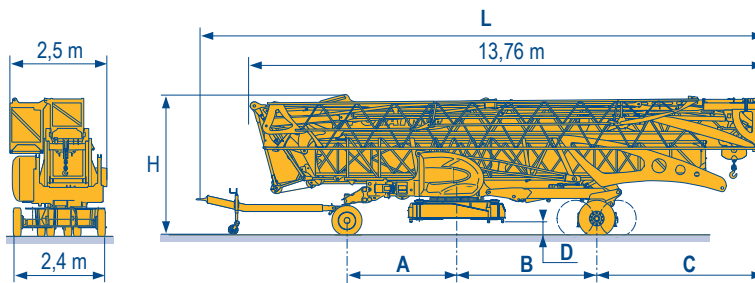
POTAIN

F	D	GB	E	I	P
Levage	Heben	Hoisting	Elevación	Sollevamento	Elevação
Distribution	Katzfahren	Trolleying	Distribución	Distribuzione	Distribuição
Orientation	Schwenken	Slewing	Orientación	Rotazione	Rotação
Translation	Kranfahren	Travelling	Traslación	Traslazione	Translação
Nous consulter	Auf Anfrage	Consult us	Consultarnos	Consultateci	Consultar-nos

Transport
Transport
Transport
Transporte
Trasporto
Transporte

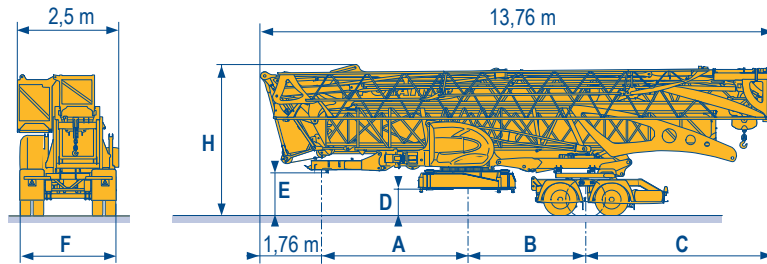
MEG 1

- DJ80/S120
- DJ100/S120
- DJ105/S125
- DJ126M/S125
- DJ126M/S215M



	L (m)	A (m)	B (m)	C (m)	D (m)	H (m)
DJ80/S120	14,96	2,95	3,77	4,37	0,35	3,66
DJ100/S120	14,96	2,95	3,77	4,37	0,35	3,66
DJ105/S125	14,96	2,95	3,77	4,37	0,35	3,66
DJ126M/S125	15,1	2,95	3,77	4,37	0,35	3,66
DJ126M/S215M	15	3,75	3,21	4,93	0,67	3,97

- SL121/J135
- SL121/S215M
- SL122/J215M



	A (m)	B (m)	C (m)	D (m)	E (m)	H (m)	F (m)
SL121/J135	3,85	3,77	4,38	0,77	1,3	4,06	2,45
SL121/S215M	3,85	3,21	4,94	0,66	1,2	3,96	2,4
SL122/J215M	3,85	3,21	4,94	0,66	1,2	3,96	2,45



- F**
Chantier
- D**
Baustelle
- GB**
Site
- E**
Obra
- I**
Cantiere
- P**
Estaleiro



Document commercial non contractuel. Pour toute information technique se référer à la notice correspondante.

Unverbindliches Vertriebsdokument. Für technische Informationen, siehe die entsprechenden Anweisungen.

This commercial document is not legally binding. For any technical information, please refer to the corresponding instructions.

Documento comercial non contractuel. Para cualquier información técnica, ver la noticia correspondiente.

Documento commerciale non vincolante, per tutte le informazioni tecniche fare riferimento al catalogo istruzioni.

Documento comercial não contratual. Para qualquer informação técnica complementar consultar as respectivas instruções.



Americas
Tel : +1 888 479 7278
Tel : +1 717 593 2000

Europe - Middle East - Africa
Tel : +33 (0) 4 72 81 50 00
Tel : +44 (0) 191 522 2000

Asia - Pacific
Tel : +65 6264 1188
Fax : +65 6862 4040

www.manitowoccrane.com

18, rue de Charbonnières - B.R.173
69132 ECULLY Cedex - France

Tél. : +33 (0) 4 72 18 20 20
Fax. : +33 (0) 4 72 18 20 00
www.manitowoccrane.com

Igo T 70

Code F-89985-71_Réf. 2006 46 MEG 1

Copyright.Reproduction interdite © POTAIN 2006

Réalisation Secotec